

A dark blue background featuring a network diagram of interconnected grey circles of various sizes, representing a global or organizational network.

NSW
Settlement
Partnership

SSI
settlementservices
international

**NSW
Settlement
Partnership
Highlights
2017–2018**



About

The NSW Settlement Partnership (NSP) is a consortium of community organisations, led by Settlement Services International (SSI), delivering settlement services in agreed areas of NSW under the Department of Social Services' Settlement Services Program (SSP).

The NSP represents a unique and innovative settlement services model and provides an opportunity for organisations with a long and proud history in service delivery to migrants, refugees and humanitarian entrants to work collaboratively to address the aim and objectives of the SSP.

The consortium comprises 23 organisations, including SSI and its 11 member Migrant Resource Centres and multicultural services, as well as 11 community organisations located around the state.

Using the partners' grassroots experience in their local communities, the NSP's high-quality, integrated services support self-reliance, equitable participation in Australian society and, as a consequence, promote social cohesion and productive diversity within the Australian community.

Strong partnership

The period 2017-18 was a one of consolidation for the NSP, building on good practice and the strengths of the network.

At the consortium level, the NSP reached new levels of collaboration and sophistication, as evident in the development of the NSP English, Employment and Education and Training Framework, the organisation of the NSP Showcase event, and the production of *The NSP: In Focus* booklet.

Across individual partners there was a focus on fine tuning projects to address the needs of the target group, especially in relation to small and dispersed communities, as well as exploration of new and innovative approaches to engage with and meet the needs of the community.

Outcomes for clients in the three E's

Supporting clients to achieve outcomes in the three E's (Employment, English, and Education and Training) continues to be a focus for the NSP.

To guide NSP operations and reinforce consistent approaches to the achievement of Employment, English, and Education and Training (EEET) outcomes for clients a NSP EEET Strategic Framework was developed and endorsed by NSP partners.

The framework is being implemented through the 2018 NSP EEET Action Plan.

NSP Showcase

On November 7, 2018, the consortium held the NSP Showcase, which was a great opportunity to promote the work of the NSP to service providers and government agencies.

The day's program showcased many strong examples of the outcomes the NSP has achieved, including an insightful youth panel session, an audience Q&A, and in-conversations from NSP members on activities and key learnings.

The NSP: In Focus

The *NSP: In Focus* booklet was launched at the NSP Showcase by the then Assistant Minister for Social Services and Multicultural Affairs, Senator Zed Seselja.

The booklet shares the success of the NSP consortium model, replete with best practice and innovative case studies and stories from clients who received support from the NSP since its establishment in 2015.

Strengthening Service Planning

SSI conducted a Service Reach Analysis to strengthen the knowledge of NSP partners regarding the demographics within their catchment areas, and to support their capacity to deliver targeted services to the most significant and most vulnerable groups. This has assisted the NSP to provide more targeted and relevant activities for local communities and clients.

Innovation

The Settlement Innovation Fund projects represent a wide body of experimentation and innovation across the settlement sector in Sydney and NSW.

In 2017-2018 there were seven funded projects. Examples include SydWest's Refugee Youth Radio project, Western Sydney Migrant Resource Centre's Wandering Books Initiative and Core Community Services' My Voice, Our Journey Initiative.

Youth work

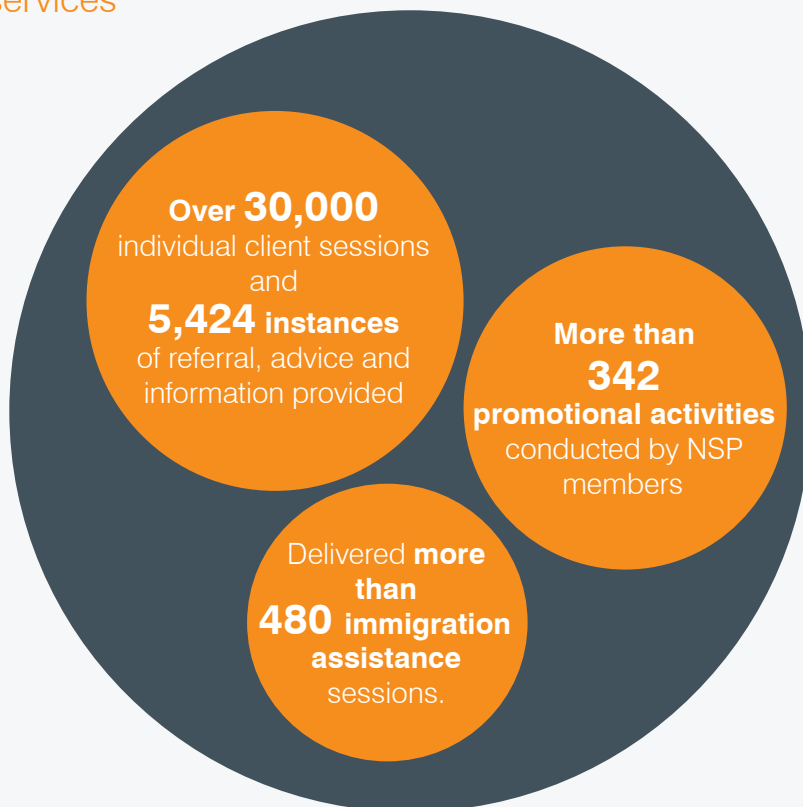
Addressing the needs of young people remains a key priority for NSP partners with recognition that youth face additional settlement challenges. The NSP Youth Workers Network (YWN) and Youth Collective brought together youth workers from settlement services and youth agencies to strategise and collaborate on specific youth issues, run youth activities, and ensure youth voices help shape program design.

To minimise the risks of young people becoming disengaged from support services, the Newly Arrived Refugee Youth (NARY) program was launched in 2017. Adopting an early intervention strategy, the NARY project aims to link Humanitarian Settlement Program (HSP) youth in the Liverpool and Fairfield LGAs with SSP activities.

The project also seeks to give voice to newly arrived young people to inform the planning of youth activities. The project is providing valuable insight into emerging issues and best practice methods for engaging youth.



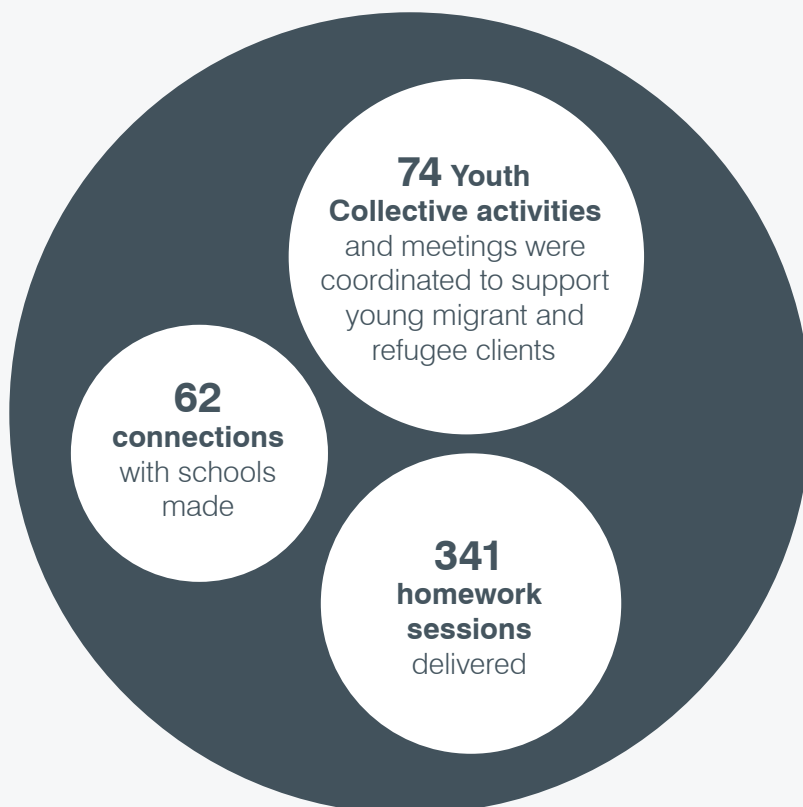
Deliverable 1 –
Casework/coordination
and delivery of services



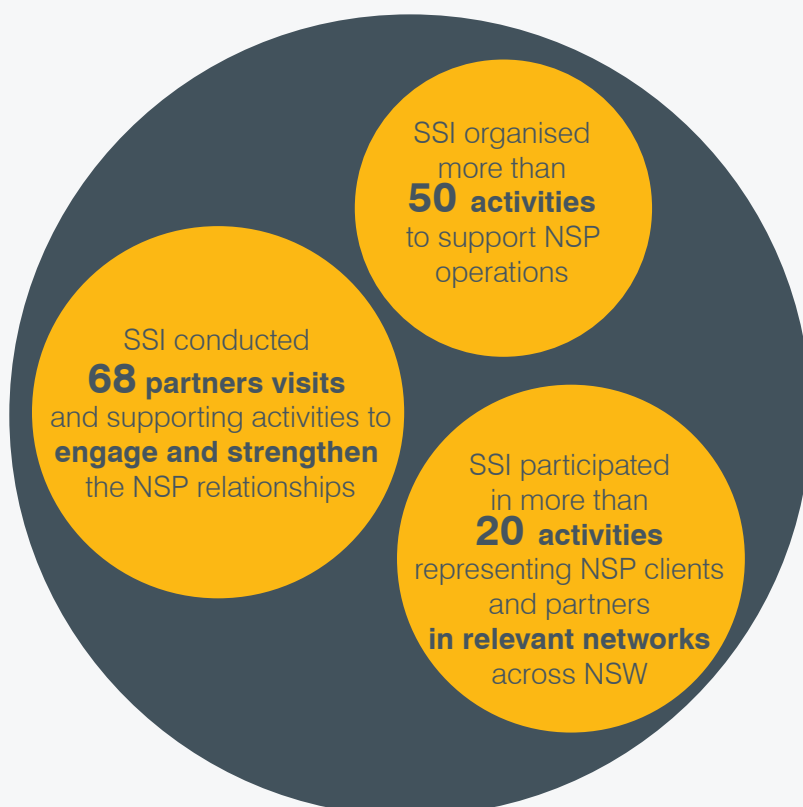
Deliverable 2 -
Community Coordination
and Development



Deliverable 3 – Youth Settlement Services



Deliverable 4 – NSW Settlement Partnership





NSP Partners:

Advance Diversity Services
Auburn Diversity Services Inc.
Bathurst Information and Neighbourhood Centre
Community Migrant Resource Centre
Community Northern Beaches
CORE Community Services
Dubbo Neighbourhood Centre
Great Lakes Agency for Peace and Development International
GyMEA Community Aid & Information Service
Illawarra Multicultural Services Inc.
Khmer Community of NSW
Lebanese Community Council of NSW
Macarthur Diversity Services
Manning Valley Neighbourhood Services Inc.
Melkite Catholic Welfare Association
Metro Assist
Mount Druitt Ethnic Communities Agency
Nepean Multicultural Access Inc.
Northern Settlement Services Ltd
Settlement Services International
Sydney Multicultural Community Services
SydWest Multicultural Services
Western Sydney Migrant Resource Centre

**For more information please visit
nsp.ssi.org.au**